

**735/2**

**TECHNICAL DRAWING**

Paper 11

July / August 2019

3 hours

**UGANDA CERTIFICATE OF EDUCATION**

Building drawing

Paper 11

3 hours

**INSTRUCTIONS TO CANDIDATES**

- Answer ALL questions.
- All dimensions of figures are in millimeters
- Where dimensions are not given please use your own discretion.
- Use both sides of the drawing paper A2

## SPECIFICATIONS

**FOUNDATION:** 690 mm wide by 230 mm thick concrete strip foundation at 1200 mm below ground level.

**FLOOR:** 250 mm thick hard core below 200 mm thick site concrete and finished with 25 mm thick cement and sand screed.

**WALLS:** 3000 mm high from floor level to wall plate level. external walls are bonded in *English 225 mm thick*

**ROOF:** *pitched* roof at 30° and covered with corrugated iron sheets

- Tie beam 150 mm x 50 mm
- Rafters 100 mm x 50 mm
- Purlins 100 mm x 50 mm
- Struts 100 mm x 50 mm
- Wall plate 75 mm x 75 mm

*Barge* and *fascia* boards are 200 mm x 25 mm

## DOORS:

**D1-** 2100 mm high x 900 mm wide **flush** door

**D2-** 2100 mm high x 1200 mm wide **Double Leaf Framed, Ledged, Braced and Battened** door.

**D3 -** 2100 mm high x 2800 mm wide **six panelled** door

**APRON:** 550 mm wide by 150 mm high.

## WINDOWS:

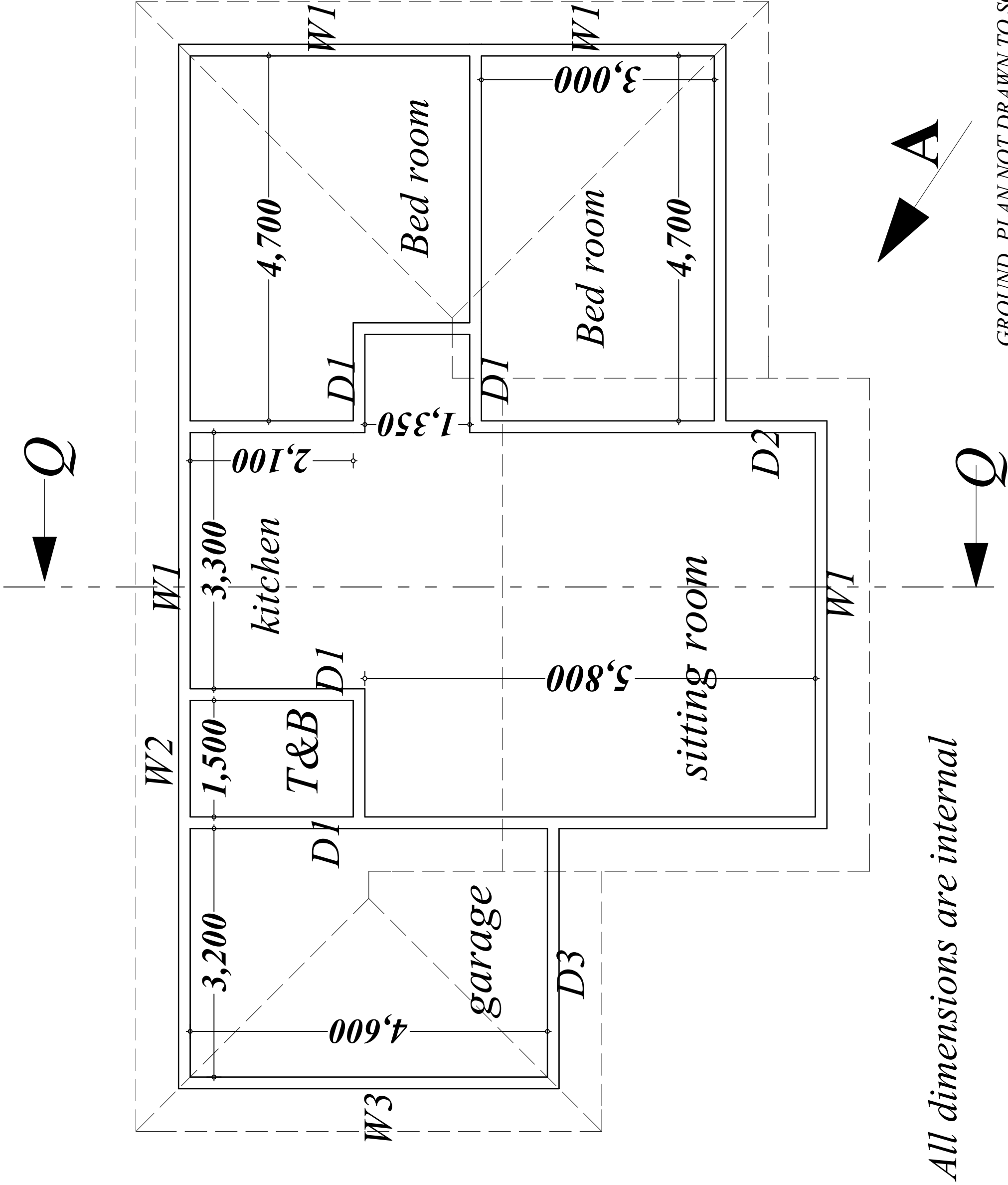
**W2-** 600 mm high x 600 mm wide **glazed fixed** window

**W1-** 1200 mm high x 1200 mm wide **casement metallic** window

**W3-** 600 mm high x 2400 mm wide **pompe** window

## Questions

1. To a scale of **1:100** produce a ground plan and show appropriate symbols for fittings in the sitting room.
2. To a scale of **1:100** project a cross-section **Q-Q**. fully label all details.
3. To a scale of **1:100** project a front elevation
4. Produce a proportional pictorial drawing of the building seen from direction of arrow A
5. Produce a neat title block



*All dimensions are internal*

GROUND PLAN NOT DRAWN TO SCALE